

SCALE 1:250.000

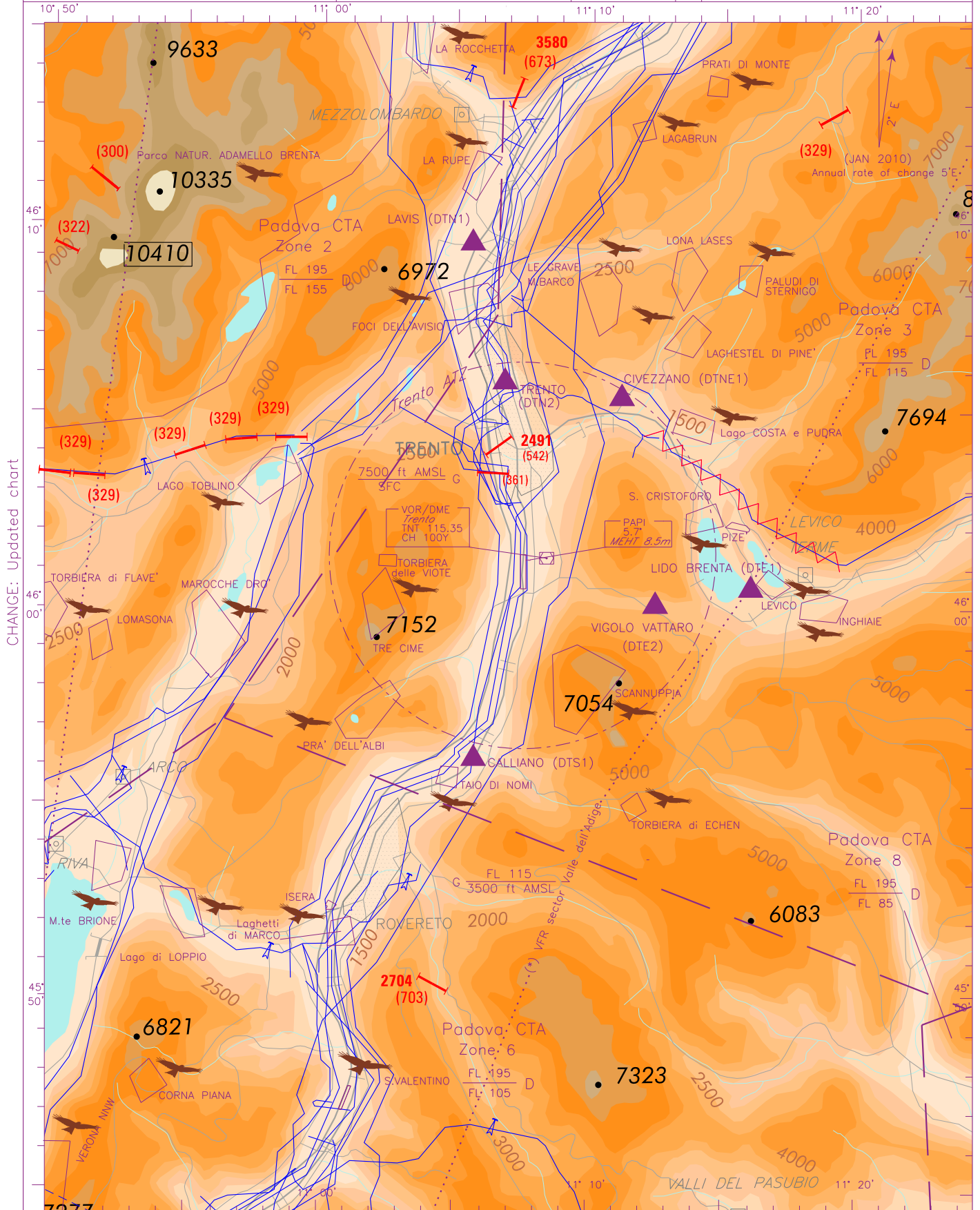


FIS *Padova Information* 124.150
 ACS *Padova Radar* 120.725
 AFIS *Trento Aerodrome Info* 119.650

AD ELEV
 610

L
 I
 D
 T

TRENTO/MATTARELLO



CHANGE: Updated chart

AIRSPACE CLASSIFICATION
 See AIP ENR 1.4

TRANSITION ALT 10000 ft

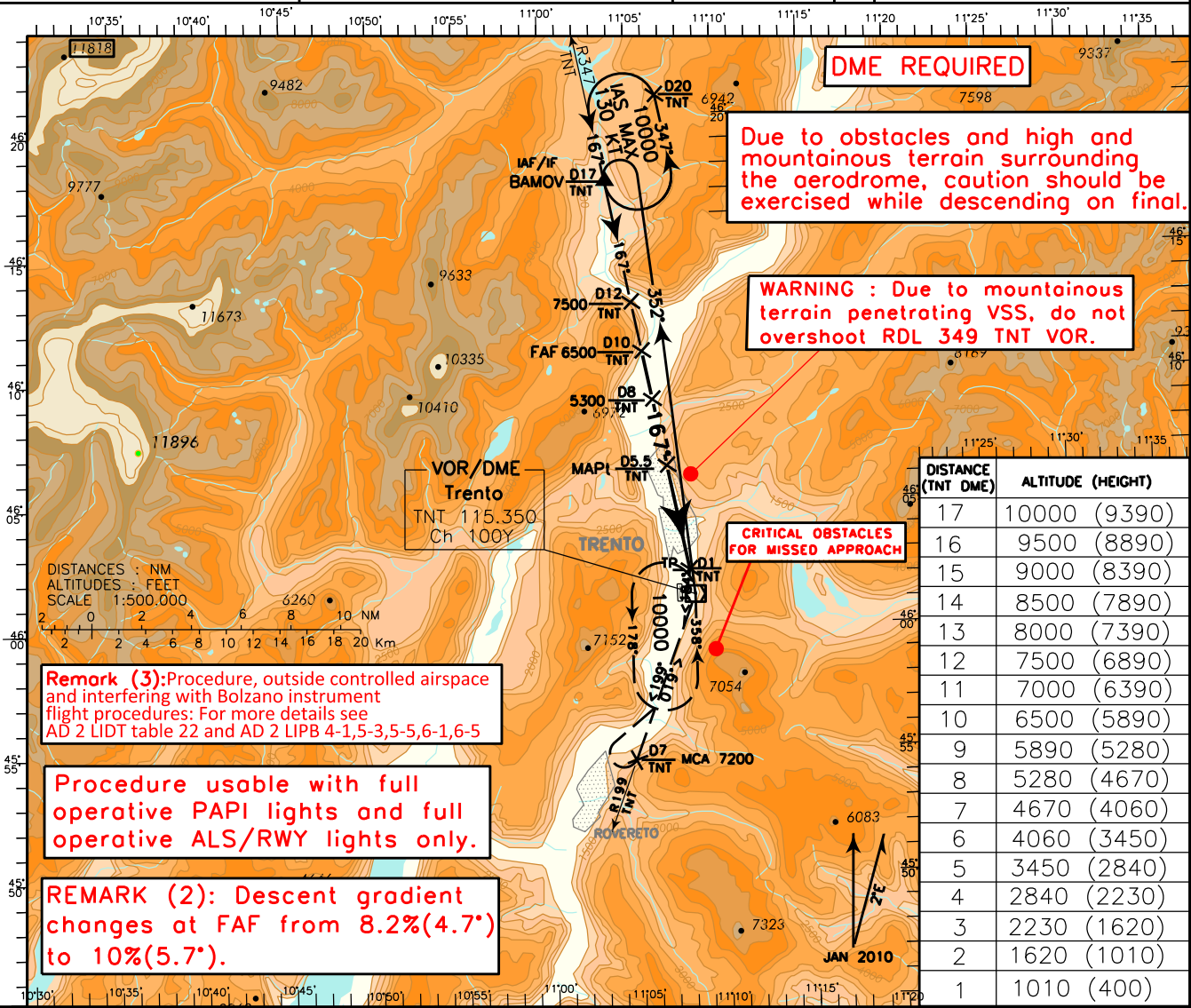
BEARINGS ARE MAGNETIC
 ELEV AND ALT IN FT

Vertical limits: 500 m AGL
 SFC

(*) For more details VFR Sector Valle dell'Adige
 See also ENR 2.1.1.1

LEGEND

<p>Remark (1): Final Approach track offset 11° from RWY centre line. Final approach track intersects extended RWY centre line 5.373m (2.9NM) before THR 18.</p>	PADOVA ACC	120.725	AD ELEV	LIDT	<p>TRENTO/Mattarello VOR RWY 18 CAT H INSTRUMENT GUIDED CLOUD BREAKING PROCEDURE</p>	
	PADOVA FIC	124.150				610
	AFIS TRENTO Aerodrome Info	119.650				



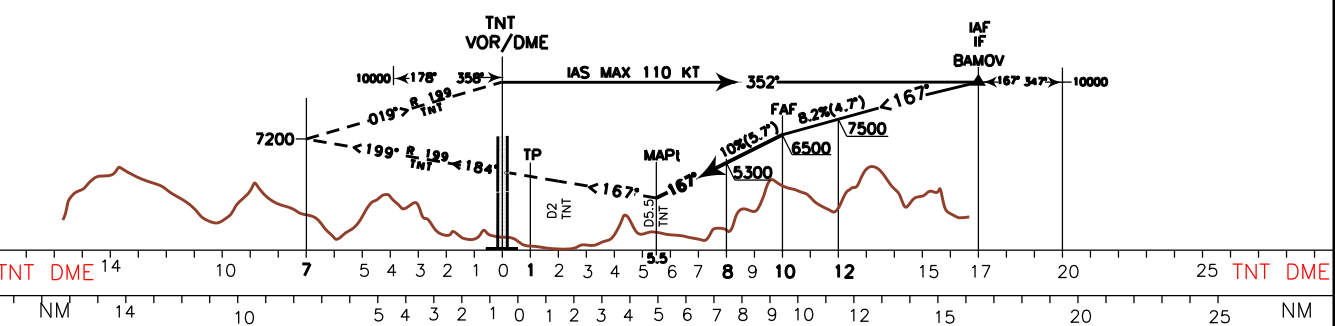
DISTANCE (TNT DME)	ALTITUDE (HEIGHT)
17	10000 (9390)
16	9500 (8890)
15	9000 (8390)
14	8500 (7890)
13	8000 (7390)
12	7500 (6890)
11	7000 (6390)
10	6500 (5890)
9	5890 (5280)
8	5280 (4670)
7	4670 (4060)
6	3450 (2840)
5	2840 (2230)
4	2230 (1620)
3	1620 (1010)
2	1010 (400)

Remark (3): Procedure, outside controlled airspace and interfering with Bolzano instrument flight procedures: For more details see AD 2 LIDT table 22 and AD 2 LIPB 4-1,5-3,5-5,6-1,6-5

Procedure usable with full operative PAPI lights and full operative ALS/RWY lights only.

REMARK (2): Descent gradient changes at FAF from 8.2%(4.7') to 10%(5.7').

TRANSITION ALTITUDE 10000 Missed Approach: Continue on RDL 347 TNT VOR climbing to 10.000 ft. At 1 NM TNT DME, on RDL 347, turn right on TR 184° to join RDL 199 TNT VOR until point RDL 199/7NM TNT VOR/DME (MCA 7200 ft), then turn right to join again RDL 199 TNT VOR bound to TNT VOR/DME. Missed approach gradient 4.2% (Cat H standard)



OCA(OCH)	H	<p>Minimum Visibility: 10 Km</p> <p>Ceiling: 5000 ft</p>	<p>MNM SECT ALT</p>
VOR+DME	3930 (3320)		